



# SP60 GNSS Receiver



Simply Versatile

VERSATILE  
RELIABLE  
L-BAND

INNOVATIVE



# SP60

## SP60 GNSS Receiver

The Spectra Precision SP60 is a new generation GNSS receiver offering a high level of flexibility to cover any survey demand from simple post-processing, through standard UHF or unique Long Range Bluetooth base and rover systems to sophisticated RTK and CenterPoint RTX capable rover solutions.

Combining the unique all-signals-tracking and processing Z-Blade GNSS-centric technology and L-band capability for satellite-delivered CenterPoint® RTX service, the SP60 receiver provides the most reliable measurements and the highest possible accuracy under any conditions anywhere in the world.

### Key features

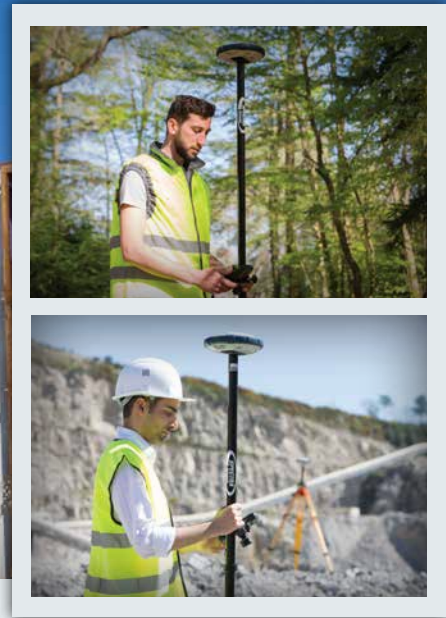
- Extended survey scalability
- New 240-channel 6G ASIC
- Z-Blade GNSS-centric
- CenterPoint RTX capable rover
- Internal TRx UHF radio
- Long Range Bluetooth
- Anti-theft protection

**CenterPoint.**  
**RTX**



*Patented  
inside-the-rod  
mounted UHF  
antenna design*





## Truly scalable and versatile

Extremely scalable and versatile, SP60 can respond to any type of surveying job, starting with a simple L1 GPS only post-processing solution up to dual-frequency GNSS network RTK rover. Also, the L-band capable GNSS antenna delivers CenterPoint RTX positioning in those places where an RTK network is not available. Finally, optional UHF transmit radio or embedded Long Range Bluetooth enable SP60 receivers to be used as a base and rover system. This extended flexibility allows surveyors to start with a simple solution, and through hardware and firmware upgrades, adapt the SP60 to more complex survey jobs.

## Unique 6G GNSS-centric technology

Exclusive Z-Blade processing technology running on a next-generation Spectra Precision 240-channel 6G ASIC fully utilizes all 6 GNSS systems: GPS, GLONASS, BeiDou, Galileo, QZSS and SBAS. The unique GNSS-centric capability optimally combines GNSS signals without dependency on any specific GNSS system; this allows SP60 to operate in GPS-only, GLONASS-only or BeiDou-only mode if needed. Thanks to this unique GNSS technology, SP60 is optimized for tracking and processing signals even in very challenging environments.

## CenterPoint RTX capable

CenterPoint RTX service delivered via satellite is the most accurate satellite-delivered correction service available. It doesn't require an RTK base station or cellular coverage. SP60, empowered with an L-band GNSS antenna, is CenterPoint RTX capable, which is ideal for operating in areas where there is no network available and a local base and rover set-up is not possible. Enabled to receive satellite-delivered CenterPoint RTX corrections, SP60 can provide less than 4 cm positions within 30 minutes or less initialization. Thanks to the CenterPoint RTX technology and satellite coverage, SP60 GNSS receiver can deliver high accuracy positioning anywhere in the world.

## The Spectra Precision experience

Spectra Precision Survey Pro or FAST Survey field software provides easy-to-use, yet powerful GNSS workflows, letting the surveyor concentrate on getting the job done. Spectra Precision Survey Office Software provides a complete office suite for data processing and Spectra Precision Central cloud computing solution offers a simple to use pathway to data exchange and management. When combined with the most advanced and rugged field data collectors from Spectra Precision, SP60 is a very powerful and complete solution.

## Built-in Long Range Bluetooth

SP60 integrates powerful Long Range Bluetooth capabilities opening new operating modes for surveyors. Now, the Bluetooth wireless communication can be used as an alternative radio link between base and rover over a few hundred meters range making this solution very attractive for small site surveys. Easier and simpler than UHF radio, and without any need for a license, this can be a very efficient way to quickly setup a short range base rover solution.

## Anti-theft protection

A unique anti-theft technology secures SP60 when installed as a field base station in remote or public places and can detect if the product is disturbed, moved or stolen. This technology allows the surveyor to lock the device to a specific location and make it unusable if the device is moved elsewhere. In this case, SP60 will generate an audio alert and block the device from further use. SP60's anti-theft technology provides surveyors with remote security and peace of mind.

## Advanced design

In addition to the cutting-edge L-band capable GNSS antenna, and unique Long Range Bluetooth module, the SP60 GNSS receiver design incorporates a number of innovative ideas and enhancements. It features a rugged, impact-resistant housing, easily withstanding 2m pole drops. Waterproof to IP67 standard, it can handle the toughest outdoor conditions. The patented UHF antenna, set inside the fiberglass rod, extends the range of RTK radio performance and provides protection at the same time. All of these enhancements make the design of SP60 GNSS receiver truly unique and powerful.



# SP60 Technical Specifications

## GNSS characteristics

- 240 GNSS channels
  - GPS L1C/A, L1P(Y), L2P(Y), L2C
  - GLONASS L1C/A, L2C/A, L3
  - BeiDou B1 (phase 2), B2
  - Galileo E1, E5b
  - QZSS L1C/A, L2C, L1SAIF
  - SBAS L1C/A
  - L-band
- Patented Z-Blade technology for optimal GNSS performance
  - Full utilization of signals from all 6 GNSS systems (GPS, GLONASS, BeiDou, Galileo, QZSS and SBAS)
  - Enhanced GNSS-centric algorithm: fully-independent GNSS signal tracking and optimal data processing, including GPS-only, GLONASS-only or BeiDou-only solution (autonomous to full RTK)
  - Fast Search engine for quick acquisition and re-acquisition of GNSS signals
- Patented SBAS ranging for using SBAS code & carrier observations and orbits in RTK processing
- Patented Strobe™ Correlator for reduced GNSS multi-path
- Up to 10 Hz real-time raw data (code & carrier and position output)
- Supported data formats: ATOM, CMR, CMR+, RTCM 2.1, 2.3, 3.0, 3.1 and 3.2 (including MSM), CMRx and sCMRx (rover only)
- NMEA 0183 messages output

## Real-Time accuracy (RMS) <sup>(1)(2)</sup>

### SBAS (WAAS/EGNOS/MSAS/GAGAN)

- Horizontal: < 50 cm
- Vertical: < 85 cm

### Real-Time DGPS position

- Horizontal: 25 cm + 1 ppm
- Vertical: 50 cm + 1 ppm

### Real-Time Kinematic Position (RTK)

- Horizontal: 8 mm + 1 ppm
- Vertical: 15 mm + 1 ppm

## CenterPoint RTX <sup>(1)(2)</sup>

- Horizontal 4 cm (0.13 ft)
- Vertical 9 cm (0.29 ft)
- Convergence time: 30 minutes or less <sup>(6)</sup>

## Real-Time performance

- Instant-RTK® Initialization
  - Typically 2 sec for baselines < 20 km
  - Up to 99.9% reliability
- RTK initialization range: over 40 km

## Post-Processing accuracy (RMS) <sup>(1)(2)</sup>

### Static & Fast static

- Horizontal: 3 mm + 0.5 ppm
- Vertical: 5 mm + 0.5 ppm

### High-Precision Static <sup>(3)</sup>

- Horizontal: 3 mm + 0.1 ppm
- Vertical: 3.5 mm + 0.4 ppm

## Data logging characteristics

### Recording interval

- 0.1 - 999 seconds

## Physical characteristics

### Size

- 21 x 21 x 7 cm (8.3 x 8.3 x 2.3 in)

### Weight

- 930 g (2.08 lb)

### User interface

- Five LEDs for Power, Tracking, Bluetooth, Recording, Radio operations

### I/O interface

- RS232 serial link
- USB 2.0/UART and USB OTG
- Bluetooth 2.1 + EDR. Long range: Class 1 (19dbm)

### Memory

- 256 MB internal memory NAND Flash
- Over a month of 15 sec. raw GNSS data from 14 satellites

### Operation

- RTK rover & base
- RTK network rover: VRS, FKP, MAC
- NTRIP, Direct IP
- Post-processing
- CenterPoint RTX (IP and satellite)

## Environmental characteristics

- Operating temperature: -40° to +65°C / (-40° to +149°F) <sup>(4)</sup>
- Storage temperature: -40° to +85°C / (-40° to +185°F) <sup>(5)</sup>
- Humidity: 100% condensing
- IP67 waterproof, sealed against sand and dust
- Drop: 2m pole drop on concrete
- Shocks: MIL STD 810 (fig 516.5-10) (01/2000)
- Vibration : MIL-STD-810F (fig 514.5C-17) (01/2000)

## Power characteristics

- Li-Ion battery, 7.4 V, 2600 mAh
- Battery life:
  - 10 hrs (GNSS On, UHF Rx Off)
  - 8 hrs (GNSS On, UHF Rx On)
- External DC power: 9-28 V

## Standard system components

- SP60 receiver
- Li-Ion battery
- Dual battery charger, power supply and international power cord kit
- Tape measure (3.6 m / 12 ft)
- 7 cm pole extension
- USB to mini-USB cable
- 2 year warranty

## Optional system components

- SP60 UHF Kit (410-470 MHz 2W TRx)
- SP60 Field Power Kit
- SP60 Office Power Kit
- Data collectors
  - Ranger 3
  - T41
  - MobileMapper 20
  - ProMark 120
- Field software
  - Survey Pro
  - FAST Survey
  - ProMark Field

(1) Accuracy and TTFF specifications may be affected by atmospheric conditions, signal multipath, satellite geometry and corrections availability and quality.

(2) Performance values assume minimum of five satellites, following the procedures recommended in the product manual. High multipath areas, high PDOP values and periods of severe atmospheric conditions may degrade performance.

(3) Long baselines, long occupations, precise ephemeris used

(4) At very high temperatures UHF module should not be used in the transmitter mode. With UHF transmitter on radiating 2W of RF power, the operating temperature is limited to + 55°C (+131°F).

(5) Without batteries. Batteries can be stored up to +70°C.

(6) Receiver convergence time varies based on GNSS constellation health, level of multipath, and proximity to obstructions such as large trees and buildings.

## Contact Information:

### AMERICAS

Spectra Precision Division  
10368 Westmoor Drive  
Westminster, CO 80021, USA  
+1-720-587-4700 Phone  
888-477-7516 (Toll Free in USA)

### EUROPE, MIDDLE EAST AND AFRICA

Spectra Precision Division  
Rue Thomas Edison  
ZAC de la Fleuriaye - CS 60433  
44474 Carquefou (Nantes), France  
+33 (0)2 28 09 38 00 Phone

### ASIA-PACIFIC

Spectra Precision Division  
80 Marine Parade Road  
#22-06, Parkway Parade  
Singapore 449269, Singapore  
+65-6348-2212 Phone



[www.spectraprecision.com](http://www.spectraprecision.com)

Please visit [www.spectraprecision.com](http://www.spectraprecision.com) for the latest product information and to locate your nearest distributor.

© 2015, Trimble Navigation Limited. All rights reserved. Spectra Precision is a Division of Trimble Navigation Limited. EPOCH, FOCUS, Spectra Precision and the Spectra Precision logo are registered trademarks of Trimble Navigation Limited or its subsidiaries. CenterPoint, LockNGo, RangePoint, RTX and StepDrive are trademarks of Trimble Navigation Limited. Windows Mobile is a trademark of Microsoft Corporation, registered in the United States and/or other countries. Ashtech, the Ashtech logo, Z-Blade and ProMark are trademarks of Ashtech S.A.S. or its subsidiaries. All other trademarks are the property of their respective owners. (2015/06)